

NanoLux[®] Pigment Series

Casein-free, anionic water-borne dispersions designed for leather finishes

Nanolux pigments is our top-line range of leather pigments displaying **excellent covering power, high tinting strength and outstanding resistance to heat, light and water**

- Maximum covering power ...given tight particle size control
- High tinting strength ...given color vibrancy of inherent pigment powders
- Shade consistency ...given fine dispersion process
- Outstanding smoothness and gloss ...given optimal mix of rheology and anti-cratering modifiers
- Resistance to water ...given casein-free, non-protein binder system
- Resistance to heat ...given resins that impart high thermal properties: 200°C

Our pigments are heavy-metal free. REACH-complaint. ZDHC-certified.



NanoLux[®] Pigment Series

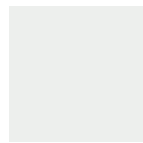
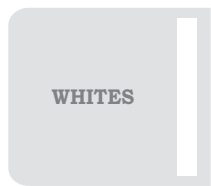
Casein-free, anionic water-borne dispersions designed for leather finishes

					PVC Migration IUF 442	Lightfastness Xeno test, 72hr, 45 deg C, 40% RH		
		Name	Type	Solid %	Viscosity cps	Full Shade	Full Shade	Reduced Shade 1:9
WHITES		Bluish White	Inorganic	50%	1500-2500	-	8	-
		White	Inorganic	50%	1500-2500	-	8	-
		Premium White	Inorganic	50%	1500-2500	-	8	-
		White Ultra	Inorganic	65%	1500-2500	-	8	-
BLACKS		Black Ferrite	Inorganic	30%	2500-3000	5	8	8
		Cover Black	Inorganic	25%	2500-3000	5	8	8
		Deep Black	Carbon Black	19%	600-1000	5	8	8
		Black 12 LX*	Carbon Black	19%	400-800	5	8	8
BROWNS		Tan Yellow	Inorganic	37%	1500 -2500	5	8	8
		Light Brown	Inorganic	32%	1500-1900	5	8	8
		Brown	Inorganic	32%	1500-1900	5	8	8
		Dark Brown	Inorganic	32%	1500-1900	5	8	8
COLORS		Bordeaux	Organic	15%	700 - 1500	5	8	8
		Lemon Yellow	Organic	23%	1500 -2500	5	7	7
		Golden Yellow	Organic	23%	1500 -2500	5	7	7
		Orange	Organic	23%	1500 -2500	4-5	7-8	5
		Fire Red	Organic	18%	700 - 1500	4-5	7-8	3-4
		Green	Organic	16%	700 - 1500	4-5	7-8	8
		Blue	Inorganic	18%	1500-1900	4-5	7-8	8

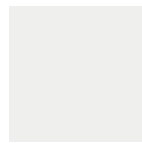
*Black 12 LX (general purpose black pigment) contains small qty of French grade casein.

NanoLux[®] Pigment Series

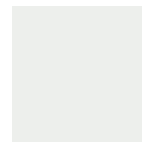
Casein-free, anionic water-borne dispersions designed for leather finishes



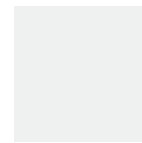
Bluish White



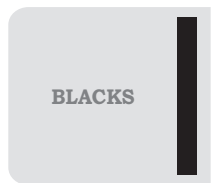
White



Premium White



White Ultra



Black Ferrite



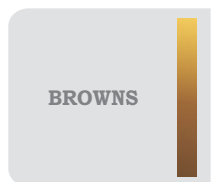
Cover Black



Deep Black



Black 12 LX*



Tan Yellow



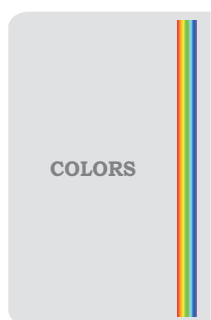
Light Brown



Brown



Dark Brown



Bordeaux



Lemon Yellow



Golden Yellow



Orange



Fire Red



Green



Blue

*Black 12 LX (general purpose black pigment) contains small qty of French grade casein.

Note: Due to technical difficulties of exact colour representation, the shades displayed may vary from the final results on leather.

NanoLux[®] Pigment Series

Casein-free, anionic water-borne dispersions designed for leather finishes

Deep-Dive: Whites

1. Bluish White

- **Customized color to achieve slight bluish tint** in white pigment
- Maintains overall high whiteness index and color brilliance
- Can be used in drums for base leather formulation

2. White

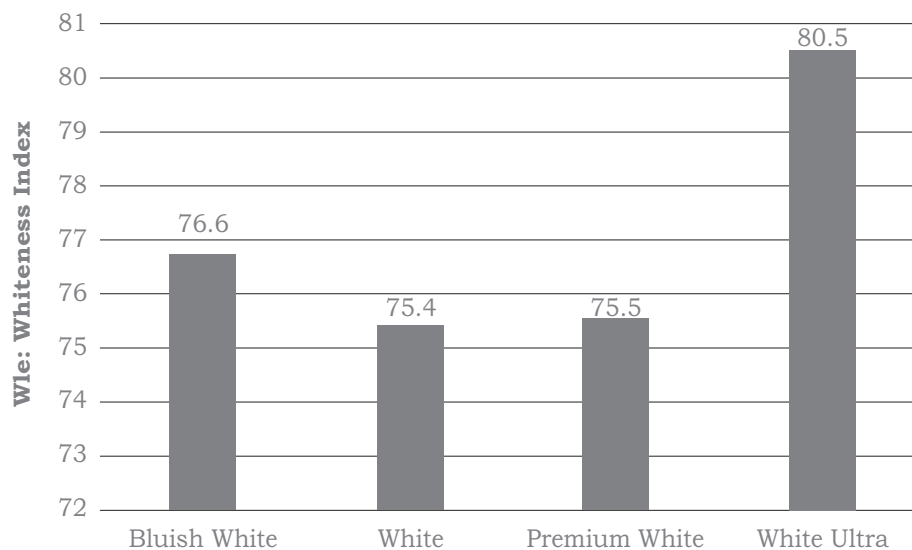
- **Most widely used general-purpose** white pigment
- Includes small quantity of TiO₂ Anatase to achieve higher opacity
- Optimum balance of whiteness to achieve neutral white color

3. Premium White

- **Superior grade white pigment** achieved with TiO₂ rutile and best dispersion system to provide optimal balance of whiteness, color brilliance and gloss values
- High opacity achieved with tight control of particle size

4. White Ultra (Renamed version – Premium White Conc)

- **Highest concentration of white pigment** made with the best raw materials to achieve highest whiteness index and lowest yellowness
- Customized dispersing system that allows for high loading of TiO₂ while keeping lower-range of viscosity
- Includes combination of post-additives that help provide highest thermal resistance and UV protection



Yellowness: Yle	1.3	2.3	2.6	1.1
Solid:	50%	50%	50%	65%

NanoLux[®] Pigment Series

Casein-free, anionic water-borne dispersions designed for leather finishes

Deep-Dive: Blacks

1. Black Ferrite

- Sets a new trend in black pigment for high performance leather
- **Highest quality deepest deep-black 100% iron oxide shade** - Particle size is tightly controlled to give high blackness despite being iron oxide-based
- Provides the most superior light fastness, heat-fastness and weatherability among all black pigments

2. Cover Black

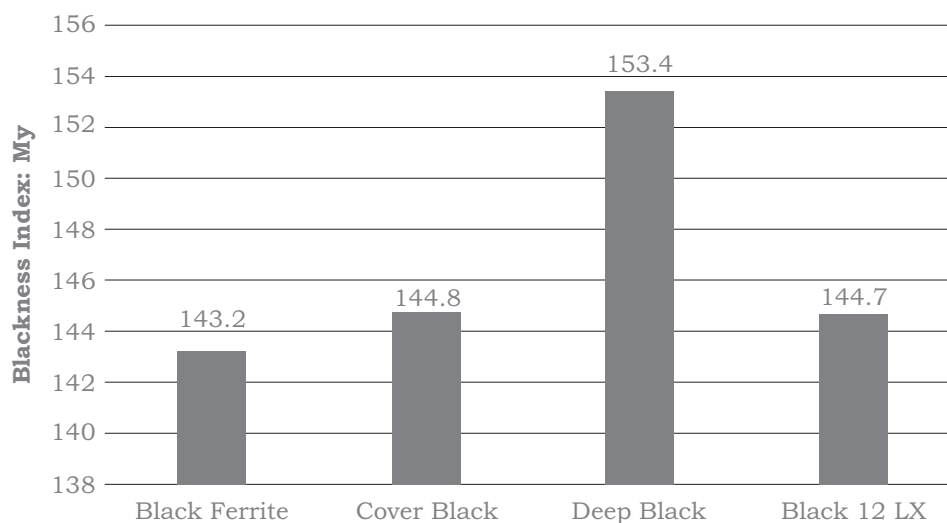
- **Black pigment with highest covering – 100% opacity index**
- Made with combination of micronized carbon black optimized with inorganic opacifiers to provide superior covering power

3. Deep Black

- Made using specialty-grade carbon black and superior dispersing system to create **deepest black shade and highest jetness**
- Possesses smallest particle size and superior tinting strength

3. Black 12 LX

- **Most widely used general-purpose** black leather pigment made from carbon black
- Contains small quantity of French-grade casein



Type:	Iron Oxide	Mixed	Carbon Black	Carbon Black
Solid:	30%	25%	19%	19%
Ash Content:	18%	5%	<1%	<1%